

HEALTH CARE

BURT, HILL

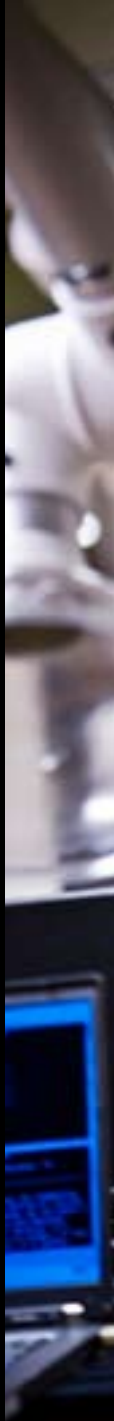




TABLE OF CONTENTS

background	3
facility types	4
client list	5
projects	6

BACKGROUND

With more than 40 years of experience in healthcare design, Burt Hill has been involved in every type of health-related project. From small community hospitals to major urban teaching hospitals, we understand the importance of healing. We design state-of-the-art health and wellness facilities that provide environments that balance the mind, body, and spirit.

Cost pressures, technological advances, and increased competition for both patients and staff are among the challenges facing today's healthcare professionals. To help keep our clients at the forefront of the competitive healthcare market, we work with them to develop environments that foster healing, accommodate technology, and provide the highest level of customer service.

Burt Hill has a dedicated healthcare design studio staffed with professionals who specialize in planning, architecture, interior design, site design, and engineering. These professionals have dedicated their careers to the creation of healing environments. Senior staff members have focused on healthcare design and research for more than 40 years.

Our healthcare team is strengthened by industry consultants with years of front-line experience. We are committed to providing the highest quality in healthcare design for a full range of facilities, evidenced by our proven track record with national and international healthcare clients.

FACILITY TYPES

Academic Medical Centers
 Acute Care / Inpatient Units
 Ambulatory Surgical Centers
 Ambulatory Care
 Cardiovascular
 Clinical Pathology Labs
 Dietary
 Diagnostic Imaging
 Emergency Departments
 Interventional Imaging
 Intensive Care Units
 Long-Term Care
 Materials Management
 Medical Office Buildings
 Mental and Behavioral Health Services
 Oncology Care
 Orthopedics
 Pediatrics
 Pharmacy
 Rehabilitation
 Senior Care
 Sleep Labs
 Surgical Suites
 Women's Health



CLIENT LIST

Achievement Centers for Children	Georgetown University Medical Center	Saint Francis Hospital
Allegheny University Hospitals	Germantown Community Hospital	Saint Francis Medical Center
Allegiance Health System	Gila River Healthcare	Saint John Medical Center
Alliance Community Hospital	Good Samaritan Hospital	Saint John's Hospital
ASSUTA Medical Centers Limited	Greater Philadelphia Health Action	SEHA
Belmont Community Hospital	Greenville Regional Hospital	Thomas Jefferson University Hospitals
Benson Hospital	Hardin Memorial Hospital	Three Rivers Orthopedics
Bluefield Regional Medical Center	Harvard Medical International	Tri-State Orthopedics
Brigham and Women's Hospital	HealthSouth Corporation	Uniontown Hospital
Boston Medical Center	Hospital of the University of Pennsylvania	University of Connecticut Health Center
Bumrungrad International	Howard Hughes Medical Institute	University Hospital, Hradec Kralove
Butler Memorial Hospital	Jameson Memorial Hospital	University of Michigan Medical Center
Child's Way	Katsel Dispensary	University of Naples Teaching Hospital
The Children's Hospital of Philadelphia	Latrobe Area Hospital	University of Pennsylvania Health System
Children's Hospital of Pittsburgh	Lee Memorial Hospital	University of Pittsburgh Medical Center
The Children's Institute	Magee Womens Hospital	University of Texas Health Science Center at Houston
Citizens General Hospital	Meadville Medical Center	University Physicians Healthcare
Clarion Hospital	Mercer County Living Center	UPMC Braddock
Clearfield Hospital	Mercy Hospital	UPMC Lee Regional
The Cleveland Clinic	Mercy Life Center Corporation	UPMC Montefiore
Conemaugh Health System	Milton S. Hershey Medical Center	UPMC Passavant
East Liverpool City Hospital	Monongalia General Hospital	UPMC Presbyterian
Edgewood Surgical Hospital	Mount Nittany Medical Center	UPMC Shadyside
Evangelical Community Hospital	Mt. Laurel Geriatric Center	UPMC St. Margaret
Excela Health	New England Baptist Hospital	Walter Reed Army Medical Center
Fairmont General Hospital	Ohio Valley General Hospital	West Virginia University Hospitals
Fulton County Medical Center	Pennsylvania Hospital	

AL MAFRAQ HOSPITAL
SEHA
ABU DHABI, UAE



Type: Hospital
Size: 1.7 million square feet
.9 million square feet of parking
Services: Architecture
Engineering
Sustainable Design
Site Design
Construction Administration



Al Mafraq Hospital is situated on a prominent site in Abu Dhabi within close proximity to the future Abu Dhabi central business district. Surrounded by an environmentally sensitive landscape design, the 745-bed hospital is distinguished architecturally by four prominent patient towers designed in a bold, contemporary style that expresses the state-of-the-art healthcare taking place within.

Each tower contains no more than 30 single rooms per floor, and each floor features nursing stations and patient control centers. All rooms have large windows and ample natural light. Special VIP floors cater to patients requiring additional privacy and attention. In addition to providing enhanced patient environments, the entire facility is designed for long-term efficiency, sustainability, and maximum energy savings, with rooftop gardens and the latest energy conservation devices.



Al Mafraq Hospital reflects the future of healthcare in Abu Dhabi. The integration of outpatient and inpatient services provides the highest level of care and achieves economies of operation. The hospital offers a new experience for medical staff and patients as it sets the standard for modern healing environments.



DORRANCE H. HAMILTON BUILDING
THOMAS JEFFERSON UNIVERSITY
PHILADELPHIA, PENNSYLVANIA



The Dorrance H. Hamilton Building transforms Thomas Jefferson University's (TJU) urban campus by creating an integrated learning medical education facility and center of community gathering. It brings together students from different medical disciplines into one integrated classroom and represents a transformation in medical education. The building design supports communal learning with a variety of simulation rooms, a clinical skills center, and simulation labs ranging from obstetrics to intensive care.

The six-story building, now the heart of TJU's academic campus, includes a technologically advanced auditorium, a clinical skills assessment center featuring virtual diagnostic and surgical suites, a rooftop terrace, small study spaces, and classrooms. A 60,000-square-foot urban plaza, designed by Andropogon Associates, is one of the largest green spaces in central Philadelphia and promotes community interaction with seating and public art installations.

A new 215-car parking facility is located underground, allowing the campus (and the city) to reclaim more than an acre of street-level space.



Type: Medical Education Facility
Size: 135,000 square feet
Services: Architecture
Engineering
Interior Design



UNIVERSITY OF PITTSBURGH
MEDICAL CENTER
PITTSBURGH, PENNSYLVANIA

Type: Academic Medical Center
Size: 3 million+ square feet
Services: Master Planning
Architecture
Engineering
Interior Design
Landscape Architecture



Burt Hill has worked with the University of Pittsburgh Medical Center (UPMC) since 1984, providing planning, architecture, engineering, and site design services in support of the academic medical center's strategic goals and direction. Throughout our 25 years of service for UPMC, we have completed numerous renovation and addition projects, including patient care units, critical care units, surgical theaters, cardiac diagnostic labs, and the emergency department. Our team has also designed renovations and additions to facilities for interventional cardiac therapy, dietary care, central sterile, MRI / CT, stereotatic radiosurgery, dialysis, radiation and medical oncology, and research.

UNIONTOWN HOSPITAL
UNIONTOWN, PENNSYLVANIA



Type: Hospital
Size: 105,000 square feet
Services: Architecture
Engineering
Interior Design
Site Design



Uniontown Hospital, a community-based, technologically advanced medical facility, undertook a facilities improvement project to improve the delivery of services to its patients and to enhance staff efficiencies. The 75,000-square-foot new patient care addition and 30,000 square feet of renovations feature 56 private inpatient rooms, with an emphasis on patient comfort and staff convenience. Included in the design is an expanded emergency department, the consolidation of outpatient services, a lobby, a conference center, administrative space, and a new chiller plant, emergency power center, and electrical service entrance. Adjacent to the outpatient core is a juice bar, varied seating venues, and a wellness garden featuring plantings, fountains, and seating.

Keeping the existing emergency department open and fully functioning was a major challenge during construction. Located on the ground floor, the department was remodeled to provide a new walk-in entrance, enhanced triage capability, and an expanded clinical area with additional exam / treatment rooms. Situated between the main hospital entrance and the emergency department entrance is the hospital's security / police suite with an enlarged control room.

GUJARAT CANCER SOCIETY

GUJARAT, INDIA



Type: Academic Medical Center
Size: 119,562 square meters
Services: Master Planning
Architecture
Engineering
Programming
Interior Design
Site Design



Burt Hill is providing full design services for the creation of a new academic medical center for The Gujarat Cancer Society. The overall master plan for the Gujarat Cancer and Research Institute (CGRI) aligns current space utilization characteristics with the institute's long-range strategic planning objectives. A major aspect of the project is to strengthen the GCRI campus community and identity by establishing the medical college as a premier provider of high quality education in the medical and allied health fields.

The master plan includes medical education and teaching facilities; a teaching hospital specializing in oncology and oncology research; and a residential component with hotel blocks, staff quarters, and executive housing. It creates a new research core at the heart of the campus with a balanced focus on primary care and specialty areas. The plan will help to evolve the institution's vision and will serve as an inspirational model that sets new standards for medical master planning throughout India.

UPMC PASSAVANT
PITTSBURGH, PENNSYLVANIA



Type: Hospital
Size: 472,000 square feet
Services: Master Planning
Architecture
Interior Design
Landscape Architecture



UPMC Passavant, a hospital in the University of Pittsburgh Medical Center (UPMC) system, is embarking on a visionary campus master plan that positions the hospital to enhance UPMC's greater mission of providing outstanding patient care to the community. The revitalized master plan aligns mission goals and physical plant needs, and optimizes staff and physical resources to best serve the patients. The plan also addresses campus utilization, character, image, environment, circulation, and expansion needs.

Projects within the master plan include traffic and parking analyses, a site utilization plan, a building expansion plan, and a phased building renovation plan. Clinical projects include expansion of radiation oncology and the addition of a cyber knife; imaging services expansion including an MRI, two CT scanners, and a PET CT scanner; a four-room cardiac catheterization lab and an 18-bed holdover / recovery area; pharmacy expansion; and a 225,000-square-foot tower addition designed to LEED certification standards. Upgrades to the central plant include a 30,000-square-foot expansion with a 4.5 MW emergency generator plant, and greatly improved boiler and chiller capacity.

MOUNT NITTANY MEDICAL CENTER
STATE COLLEGE, PENNSYLVANIA



Type: Hospital
Size: 65,000 square feet
Services: Architecture
Interior Design



Burt Hill has provided comprehensive planning and design services for Mount Nittany Medical Center since 1997. These services include interactive, ongoing master planning that responds to the strategic plan and mission of the institution. The completion of an addition to the East Wing (two construction phases) expands the critical care bed count from eight to 24, adds 44 private med/surg beds, and includes a host of other improvements to almost every hospital department and service line. The expansion of the bed complement allows the center to have the majority of the patient rooms as private beds unless there is an emergency surge in patient demand, in which case some of the older, semi-private rooms will return to service.

Current projects in planning include the replacement of the emergency department, the expansion of surgical services, and the expansion of oncology services.



EDGEWOOD SURGICAL HOSPITAL
TRANSFER, PENNSYLVANIA



Ambulatory surgery centers (ASCs) have proven to be a model for delivering high quality specialized medical services that is both profitable for the owners and cost-effective for patients and their insurance companies. An ASC that adds patient beds to become a speciality hospital expands its capabilities and opportunities for business. This model was used as the foundation for the design of Edgewood Surgical Hospital, the first specialty surgical hospital in Pennsylvania.

The freestanding, outpatient surgery facility includes four operating rooms, two endoscopy rooms, an imaging suite with an open MRI and x-ray equipment, patient holding and recovery areas, a lounge, and a ten-bed nursing unit to accommodate overnight stays. The spacious lobby has a hotel-like atmosphere and features a nourishment area for family. The hospital also houses its own supply and sterilization facilities, as well as upscale locker rooms for the physicians and staff.

Type: Outpatient Facility
Size: 26,000 square feet
Services: Architecture
Engineering
Interior Design
Landscape Architecture

ALLIANCE COMMUNITY HOSPITAL
ALLIANCE, OHIO



Type: Hospital
Size: 393,000 square feet
Services: Architecture
Engineering
Interior Design
Landscape Architecture



Alliance Community Hospital's state-of-the-art medical campus includes a 102-bed acute care hospital, a 90-bed nursing home, and a professional office building. All three buildings are connected by an underground tunnel and above grade connecting links, which combine with landscaped green areas to tie the entire site together as a patient-friendly health center.

The hospital's emergency department houses 23 patient treatment areas including trauma bays, exam rooms, an observation room, and an isolation room, in addition to CT scan and x-ray facilities. A decontamination room and a disaster storage room with exterior access prepare the hospital to respond to a disaster or act of terrorism. The department was strategically placed to allow direct horizontal adjacencies to imaging, outpatient services, and security. The OR suite, ICU, and LDRP suite are located directly above with direct access via two dedicated patient transport elevators.



CANAL POINT HOSPITAL
BUMRUNGRAD INTERNATIONAL
DUBAI, UAE

Type: Hospital

Size: 932,000 square feet

Services: Architecture
Engineering
Interior Design
Landscape Architecture
Construction Administration
Creative Services



Technology and nature live side-by-side at Canal Point Hospital. Combining a world-class medical center with a spa-like wellness center, this state-of-the-art facility provides a holistic approach to medical recovery for patients and onsite support for their loved ones. The seven-story hospital features private patient rooms; VIP suites with attached private living rooms or majlis areas; a 400-seat dining area for staff that also functions as a divisible space for conferences and training; separate outpatient departments distinctively styled for men, women, and children; and three levels of covered parking.

Vast landscaped terraces on the first, second, and fifth floors of the hospital provide immediate outdoor spaces where patients and visitors alike can relax and rejuvenate. Even closer to the natural world is the Wellness Center, a cluster of single-story structures tucked away on a podium amidst lush landscaping. The tiered, tiled roofs combine with the abundant foliage and the very shapes of the buildings to create the feel of a Thai spa.



POSNER TOWER
UPMC SHADYSIDE
PITTSBURGH, PENNSYLVANIA



Type: Hospital
Size: 66,000 square feet
Services: Architecture
Engineering
Interior Design
Landscape Architecture



An addition and renovation program at Posner Tower added five new operating rooms; two for general surgery, two for minimally invasive procedures, and one for state-of-the-art angiography / neurological specialty procedures. Features within the expanded surgical facility include robotics and voice controlled equipment and lighting, and video links to enhance surgery teaching and collaboration. A gateway entrance that connects all of the primary buildings on the Shadyside campus provides a simple way to orient patients and visitors as they arrive at the facility.

A Japanese healing garden provides a soothing environment to restore the spirit. Landscaped walkways, ancient lanterns, plant life, and seating areas contribute to a relaxed setting within the surrounding urban environment. A reflecting garden, including glossy black stones, creates a welcoming and calm atmosphere as it is viewed upon entering the building and through strategically placed windows throughout the building.



MARY BABB RANDOLPH CANCER CENTER
WEST VIRGINIA UNIVERISTY HOSPITALS
MORGANTOWN, WEST VIRGINIA

Type: Oncology Center
Size: 87,000 square feet
Services: Architecture
Engineering
Landscape Architecture



The Mary Babb Randolph Cancer Center is West Virginia's premier cancer facility with a national reputation of excellence in cancer treatment, prevention, and research. An expansion project included the renovation of 17,000 square feet of existing space, as well as the creation of a 70,000-square-foot, four-story addition. The addition contains two floors of cancer center space, which house a mix of private and semi-private infusion areas, treatment rooms, a phlebotomy area, and more comfortable waiting areas, as well as a protected waiting space for those patients whose immune systems are compromised, and a library for patient educational services. Views of the surrounding scenery are maximized to provide plenty of natural light and to create a distraction, while also keeping patient privacy in mind. Two shell floors allow for future expansion, and provisions have been made for a future conference center.

JOHN P. MURTHA CANCER CENTER
UNIVERSITY OF PITTSBURGH MEDICAL CENTER
JOHNSTOWN, PENNSYLVANIA



The John P. Murtha Cancer Center is part of the UPMC Cancer Centers network, one of the largest integrated community networks of cancer physicians and specialists in the country. The state-of-the-art facility allows patients to receive the highest quality of care without having to travel far from home.

The first floor of the two-story building houses radiation oncology, complete with a linear accelerator, IMRT technology, CT simulator, exam and treatment rooms, special procedures room, and a full complement of support space. The second floor houses medical oncology, including private treatment rooms, private and semi-private treatment cubicles, a laboratory, a pharmacy mixing room, an injection station, and all necessary support space. Large windows offer views of a healing garden, a place of peace and beauty enjoyed by patients, their families, and staff.



Type: Outpatient Facility
Size: 18,000 square feet
Services: Architecture
Engineering
Interior Design
Landscape Architecture

ALEX SCOTT DAY HOSPITAL
CHILDREN'S HOSPITAL OF PHILADELPHIA
PHILADELPHIA, PENNSYLVANIA

Type: Oncology Center
Size: 12,000 square feet
Services: Architecture
Engineering
Interior Design



The new Alex Scott Day Hospital was designed in response to the vision of Alex Scott, a pediatric cancer patient who started Alex's Lemonade Stand in order to raise money for cancer research. The state-of-the-art cancer center is located on the fourth floor of the Wood Building at The Children's Hospital of Philadelphia. Each of the 14 open therapy areas has a recliner outfitted with a flat-screen television, PlayStation, and internet capabilities to provide entertainment for patients while receiving care. Five private rooms are available for those patients who require additional privacy or a bed, and a child-like playroom featuring an Alex's Lemonade Stand mural offers activities for both patients and family members.

BREAST CARE CENTER
THOMAS JEFFERSON UNIVERSITY HOSPITAL
PHILADELPHIA, PENNSYLVANIA

Type: Oncology Center
Size: 9,000 square feet
Services: Architecture
Engineering
Interior Design



The Breast Care Center is housed in a renovated space at a Thomas Jefferson University Hospital satellite office. The basement level was converted into MRI and mammography screening areas. The third floor houses a patient education center and offices for multidisciplinary healthcare providers. The fourth floor is dedicated to diagnostics. The Breast Care Center provides the hospital with a comprehensive, off-site facility for breast care and preventative medicine.

PENN MEDICINE AT BUCKS COUNTY
UNIVERSITY OF PENNSYLVANIA
HEALTH SYSTEM
YARDLEY, PENNSYLVANIA



Type: Outpatient Facility
Size: 16,400 square feet
Services: Architecture
Engineering
Interior Design



As part of the University of Pennsylvania Health System's (UPHS's) vision to provide services to a larger geographical area, it merged two smaller general practice offices into one multi-specialty facility. The design creates a welcoming and easy to navigate environment that functionally works for the way UPHS provides healthcare.

The new facility is equipped with state-of-the-art technology and provides multi-specialty services, including primary care, radiology, and clinical lab services. A grand arrival point houses functions for registration, referrals, billing, administration, and waiting. A curved wood and glass wall directs patients to registration upon arrival. Once inside, patients are directed to one of the walk-up windows in the wood information wall off of the main waiting room or into the clinical area. The clinical area is laid out with accent walls and a floor pattern that helps direct patients to the nurses' stations, which are located strategically at the intersections of corridors and feature higher lighting levels to further help with wayfinding. An outpatient radiology suite and an outpatient cardiology office offer additional patient services.



AMBULATORY SURGERY CENTER
UPMC ST. MARGARET
HARMARVILLE, PENNSYLVANIA



Housed in a renovated 1980s medical office building, the ambulatory care center offers first-class patient care. The first floor houses the ambulatory surgical facility, which incorporates five operating rooms (all MIS capable) and a flexible 17-station, pre- and post-operative patient area. The area is designed to allow staff to process the morning patient load of pre-op patients and then shift those stations to a post-op function. The stations are designed for flexibility and allow sufficient space for family and staff. The second floor houses an endoscopy program with five procedure rooms and a similar approach to the pre-procedure / post-procedure functions. The facility is also self-sufficient in that all materials management operations are performed on site.

Accommodations for patients and their families were a key element in the design of the facility. The first floor provides a comprehensive registration facility that accommodates the early morning patient load for both the surgical facility on the first floor and the endoscopy suite on the second floor. Covered drop-off and pick-up areas, and a new entrance and elevators for the endoscopy center increase visitor comfort.

Type: Surgical Center
Size: 32,800 square feet
Services: Master Planning
Architecture
Interior Design

PENN MEDICINE AT RADNOR
UNIVERSITY OF PENNSYLVANIA
HEALTH SYSTEM
RADNOR, PENNSYLVANIA



Type: Outpatient Facility
Size: 100,000 square feet
Services: Architecture
Interior Design



The design of the state-of-the-art, multi-specialty outpatient care facility is modeled after high quality hotels. Specific design requirements called for flexible and user-friendly spaces for oncology, cardiology, primary care, pediatrics, women's care, respiratory care, rehabilitation, mental health, and imaging. Approximately 45,000 square feet of the project are dedicated to medical oncology and include an outpatient waiting area, pharmacy, ten infusion chairs, staff areas, and examination rooms. Patient areas, designed to function as individual units, feature natural daylighting and soft lighting, scenic watercolors on warm-hued walls, and cherry casework.



BURT, HILL

www.burthill.com

© 2010 Burt Hill